

APCP-1700
APCP-1700G

INTRODUCTION

READ INSTRUCTIONS CAREFULLY BEFORE ATTEMPTING TO INSTALL, OPERATE OR SERVICE LITTLE GIANT PUMP. PROTECT YOURSELF AND OTHERS BY OBSERVING ALL SAFETY INFORMATION AND ADDITIONAL INSTRUCTIONS INCLUDED WITH THIS EQUIPMENT. FAILURE TO COMPLY WITH INSTRUCTIONS COULD RESULT IN PERSONAL INJURY AND/OR PROPERTY DAMAGE! RETAIN INSTRUCTIONS FOR FUTURE REFERENCE.

SAFETY GUIDELINES



When installing this electrical equipment, basic safety precautions should always be followed, including the following:

1. READ AND FOLLOW ALL INSTRUCTIONS.
2. **WARNING:** To reduce the risk of injury, do not permit children to use this product unless they are closely supervised at all times.
3. **WARNING:** Risk of Electric Shock. Connect only to a grounding type receptacle protected by a ground-fault circuit-interrupter (GFCI). Contact a qualified electrician if you cannot verify that the receptacle is protected by a GFCI.
4. **WARNING:** Do not bury cord. Locate cord to minimize abuse from lawn mowers, hedge trimmers, and other equipment.
5. **WARNING:** To reduce the risk of electric shock, replace damaged cord immediately. Contact the manufacturer for replacement of the power cord.
6. **WARNING:** To reduce the risk of electric shock, do not use extension cord to connect unit to electric supply; provide a properly located outlet.
7. Never pump chemicals or corrosive liquids with this pump. This could damage the integrity of the enclosure and cause an electrical short. This pump has been evaluated for use with water only.
8. Never pump gasoline or other low flash point fluids with this pump. Explosion or fire could result. This pump has been evaluated for use with water only.
9. Do not run this pump dry. Running this pump without water may damage the integrity of the enclosures and cause electrical short.
10. If service is required, proceed carefully. The pump and surrounding areas may be covered with water. Never plug or unplug the device while standing in wet or damp surfaces. If necessary, remove power at the Breaker Panel or have certified electrician remove power before attempting to service. Serious or fatal shocks could result if proper procedures are not followed. Disconnect the power at the main electrical service box by switching the appropriate circuit breaker or removing fuse. In applications where screw type fuses are used, remove only the one hand while other hand or torso are free from contact with anything. Do not stand in water or do not touch any other conductive surfaces.

11. Remove pump when freezing conditions will cause water to freeze. Freezing water may result in rupture to pump and/or switch enclosure and could result in possible electrical short.
12. SAVE THESE INSTRUCTIONS

PUMP SPECIFICATIONS								
			GALLONS PER HOUR					
VOLTS	AMPS	WATTS	1 FT	5 FT	10 FT	15 FT	20 FT	23 FT
115	2.2	270	1600	1400	1000	700	300	0

CAPACITY SIZING INFORMATION

The 1600 GPH performance was obtained through a 1 inch I.D. tube, with friction losses neglected. Using a 3/4" garden hose 50 foot long reduces this performance to approximately 500 gallons per hour due to friction losses in the garden hose. If your area frequently has heavy rainfalls, (1-2 inches per hour), it may be necessary to use 1 inch tubing. This should be available in most pool supply stores.

The number of gallons of water that your pool will collect in a rainfall of one inch per house can be computed as follows:

$$\text{Cover overall length (FT)} \times \text{cover overall Width (FT)} \times .6234 = \text{Gallons Per Hour}$$

(NOTE: This is cover dimension, and not pool dimension.)

Example: A pool cover which is 16' x 32' would collect:

$$16 \times 32 \times .6234 = 319 \text{ gallons in 1 hours, in 1 inch per hour rain.}$$

A pool cover which is 20' x 40' would collect:

$$20 \times 40 \times .6234 = 499 \text{ gallons in 1 hour, in 1 inch per hour rain.}$$

INSTALLATION



Little Giant pumps are carefully packaged, inspected and tested to insure safe operation. When you receive your pump, examine it carefully to be certain that there are no broken or damaged parts, which may have occurred in shipment. If damage has occurred, (See Replacement Parts Section), make notation and notify the firm from which you purchased the unit. They will assist you in replacement or repair.

1. Be certain electrical outlet to be used meets the requirements of the National Electrical code, as well as local electrical codes, including grounding, and GFCI protection. Also verify that outlet is properly sized and located for this pump. Your installation may require a certified electrician, or plumber. See ELECTRICAL Section.
2. If necessary, check your plumbing codes to verify that final installation will be in compliance with their requirements.
3. Connect a garden hose to the hose adaptor, or use a 1 inch nipple and flexible PVC tubing secured to the pump discharge. Note: If flexible 1 inch PVC tubing is used, the free end must be secured so that it cannot blow back onto the pool cover in high wind.
4. Gently lower pump onto the pool cover by holding onto the garden hose. Be certain that you do not pull power cord plug onto pool cover. The pump is equipped with an eyelet (opposite the discharge) for attaching a positioning rope. (rope not included) Use rope and garden hose to position pump on the pool cover. It is recommended that two people position the pump. One person should hold onto electrical cord plug while second person positions pump at desired location on pool cover. The pump is equipped with an 18 AWG power supply cord that is 25 feet long, and has a 3-prong grounding type plug. Once in position, and proper electrical connections have been made, the pump is ready for testing. See ELECTRICAL section.

NOTE: Become familiar with the SAFETY INSTRUCTIONS. During the rainy season, you should check daily to see that your pump is functioning properly. Also, if you experience high winds, or excessive movement of the pool cover, be certain that the power supply cord has not been pulled onto the cover, and that the pump is still upright, with the discharge hose properly positioned. If you plan to be away from your pool for extended periods of time, it is recommended that a friend or neighbor periodically check your pool cover pump, and verify that everything is still functioning properly. Be sure to review the SAFETY INSTRUCTIONS and ELECTRICAL SHOCK HAZARDS with them!

OPERATION



The water level switch is activated by a float mechanism. This is caused by water rising around the float with the pump resting upright. This switch relies upon buoyancy force of the float to activate. The switch should cause pump to come on when the water level is approximately 2-3 inches deep. Pump should remain running until the water level is approximately .50-1.50 inches deep. **NOTE:** Temperatures near freezing may cause the "ON" level to go as high as 4 inches, and the "OFF" to be as high as 2 inches.

ELECTRICAL



1. Your pump is supplied with a 3-prong electrical plug. The third prong is to ground the pump to prevent possible electrical shock hazard. Do not remove the third prong from the plugs.
2. A separate branch electrical circuit is recommended. The electrical power required is 5 amp at 115 VAC.
3. Be sure that electrical connection cannot be reached by rising water. Under no circumstances should the connection be located where it may become flooded or submerged by water.

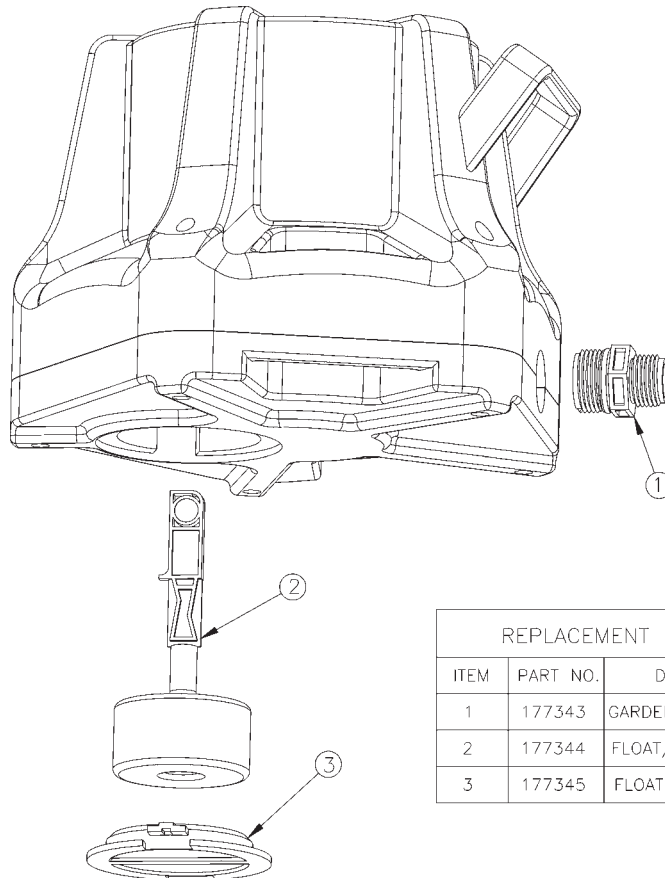
4. If you have a GFCI model, test GFCI device per the instructions on the back of the device.
5. Test the pump after all electrical connections have been made. Run water into area where pump is to be placed. Do not attempt to run the pump without water; this could cause damage to the pump. Fill the area to a normal "ON" level and allow the pump to remove water to a normal "OFF" level.

Always disconnect the electrical power before touching the pump, discharge or electrical plug when water is present in the area. Failure to do so can result in serious bodily injury and/or property damage. Always connect pump to grounded receptacle. See SAFETY INSTRUCTIONS.

SERVICE INSTRUCTIONS



1. CAUTION: Before servicing the pump, disconnect the pump from electrical service, unplug cord, remove fuse or turn off disconnect box.
2. The motor housing of the pump is completely sealed and requires no service. Disassembly of the motor housing or alteration of the power cord voids all warranty.
3. The motor is a continuous duty type with an automatic thermal overload protector device.
4. The pump can run against a restricted discharge without damage to the pump.
5. Keep pump clean and in a well maintained condition at all times. Pump should be thoroughly cleaned for summer storage.
6. If float becomes stuck, remove the float access cap on the bottom of the unit. Remove cap by turning towards the "OPEN" arrow as indicated on the cap. Clean as needed, then reinstall access cap.



REPLACEMENT PARTS LIST			
ITEM	PART NO.	DESCRIPTION	QTY
1	177343	GARDEN HOSE ADAPTOR	1
2	177344	FLOAT/STEM ASSEMBLY	1
3	177345	FLOAT ACCESS COVER	1

TROUBLESHOOTING INFORMATION

Pump will not shut off.	Stuck float.	Clean area around float.
	Defective switch.	Contact factory.
	Pump is air locked.	Shut power off for approximately 1 minute, then restart. Repeat several times to clear air from pump.
	Liquid inflow matches or exceeds pump capacity.	Larger pump required, or multiple pumps. See capacity sizing information.
	Frozen water in discharge hose.	Thaw hose or replace hose.
Pump runs but will not discharge liquid.	Lift too high for pump.	Check rating table.
	Inlet to impeller plugged.	Pull pump and clean.
	Pump is air locked.	(see corrective action above)
	Frozen water in discharge hose.	Thaw hose or change out.
Pump does not deliver rated capacity.	Lift too high for pump.	Check rated pump performance.
	Low voltage, speed too slow.	Check for proper supply voltage to make certain it corresponds to nameplate voltage.
	Impeller or discharge pipe is clogged.	Pull pump and clean. Check pipe for scale or corrosion.
Pump cycles continually.	No check valve in long discharge pipe allowing liquid to drain back onto cover.	Install a check valve in discharge line.
	Check valve leaking.	Inspect check valve for correct operation.
	Switch failed.	Have pump serviced.
	Volute clogged.	Clean screen and basket.
	Switch float stuck.	Remove access screen and clean debris from float.
	Motor failure.	Have pump serviced.
	Thermal protector activated.	Allow pump to cool.
	GFCI device activated.	Inspect allelectrical connections and reset GFCI.

LIMITED WARRANTY

Your Little Giant product is guaranteed to be in perfect condition when it leaves our Factory. It is warranted against defective materials and workmanship for a period of 12 months (90 day warranty on Models: 1-AA-OM, GKPK-SC, PP-1, PPS-1, PP-12, PPS-12 , PP-230 and Cooler King) from date of purchase by the user. No warranty on brush wear in Model 35-OM and impeller or cam in Models PP-1, PP-12, and PP-230. Any product that should fail for either of the above two reasons and is still within the warranty period will be repaired or replaced at the option of Little Giant as the sole remedy of buyer. For our customers in the CONTINENTAL UNITED STATES: Please return the defective unit, postage paid, to the factory at 301 N. MacArthur, Oklahoma City, OK 73127-6616. All defective product returned under warranty will be fully inspected to determine the cause of failure before warranty is approved.

For our customers located elsewhere; it is not economical, due to duties and freight, to return the pump to the factory for inspection. Please return the defective unit to any authorized distributor or dealer with a brief written explanation of the problem. If there are no apparent signs of customer abuse, unit will be repaired or replaced. If dispute arises over replacement of the pump, the distributor or dealer is to segregate such items and hold for inspection by a representative of Little Giant Pump Company or notify factory with details of the problem for factory disposition and settlement of warranty claim.

DISCLAIMER:

THE FOREGOING WARRANTY IS AN EXCLUSIVE WARRANTY IN LIEU OF ANY OTHER EXPRESS WARRANTIES. ANY IMPLIED WARRANTIES (INCLUDING, BUT NOT LIMITED TO ANY IMPLIED WARRANTY OF MERCHANTABILITY OR FITNESS FOR A PARTICULAR PURPOSE) TO THE EXTENT EITHER APPLIES TO A PUMP SHALL BE LIMITED IN DURATION TO THE PERIODS OF THE EXPRESS WARRANTIES GIVEN ABOVE.

Warranty will be VOID if any of the following conditions are found:

1. Sealed motor housing opened.
2. Product connected to voltage other than indicated on nameplate.
3. Cord cut off to a length less than three feet.
4. Pump allowed to operate dry (fluid supply cut off).
5. Pump used to circulate anything other than fresh water at approximately room temperature.
6. Product abuse by customer.

Any oral statements about the product made by the seller, the manufacturer, the representatives or any other parties, do not constitute warranties, shall not be relied upon by the user and are not part of the contract for sale. Seller's and manufacturer's only obligation, and buyer's only remedy, shall be the replacement and/or repair by the manufacturer of the product as described above. NEITHER SELLER NOR THE MANUFACTURER SHALL BE LIABLE FOR ANY INJURY, LOSS OR DAMAGE, DIRECT, INCIDENTAL OR CONSEQUENTIAL (INCLUDING, BUT NOT LIMITED TO INCIDENTAL OR CONSEQUENTIAL DAMAGES FOR LOST PROFITS, LOST SALES, INJURY TO PERSON OR PROPERTY, OR ANY OTHER INCIDENTAL OR CONSEQUENTIAL LOSS), ARISING OUT OF THE USE OR THE INABILITY TO USE THE PRODUCT AND THE USER AGREES THAT NO OTHER REMEDY SHALL BE AVAILABLE TO IT. Before using, the user shall determine the suitability of the product for the intended use, and user assumes all risk and liability whatsoever in connection therewith.

Some states and countries do not allow limitations on how long an implied warranty lasts or the exclusion or limitation of incidental or consequential damages, so the above limitations or exclusions may not apply to you. This warranty gives you specific legal rights, and you may also have other rights which vary from state to state and country to country.

The National Electric Code (in the USA) and similar codes in other countries require a Ground Fault Circuit Interrupter (GFCI) to be installed in the branch circuit supplying fountain equipment rated above 15 volts. 115 volt GFCI's (with various cord lengths) are in stock, and we recommend each pump be used with a GFCI.

For Warranty or Repair, please contact1.800.809.3156
 For Technical Assistance, please contact1.800.701.7894

www.LittleGiant.com
customerservice@lgpc.com
