



PARAMOUNT
POOL PRODUCTS

Stainless Steel LED Lighting

The very latest in LED technology...





Designed and manufactured in the UK



Custom fit/design lights for new installations



With LED now becoming the industry standard, Water-tec can offer the very latest in constant voltage LED technology!

Milled from a solid block of 316L grade stainless steel, the WT series offers a high lumination, elegant flush fitting light. Fixing application could not be easier due to either push-fit or threaded connection into ABS pipe, inlets or custom-made wall niches.

Square fascia is also available for most models. These are a non-stock item and require a three to four week lead time.

[LEARN MORE](#)

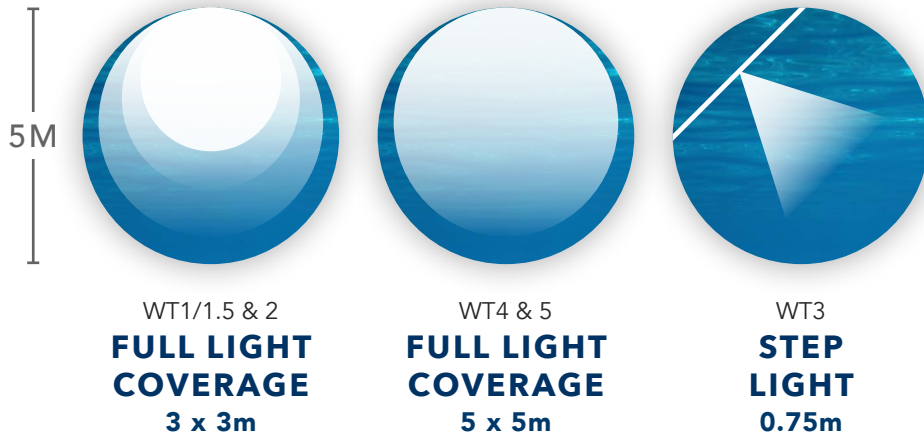
Click to watch our video

WATER-TEC

LED Coverage

The below lighting diagrams are to be used as a guide only. Specifying lighting for a swimming pool has many variables. It is important to establish the intensity of light required within the pool and how many lights are installed to determine this. The colour of the pool finish i.e. using dark tiles and the ambient light used for lighting the room must also be considered.

RGB (Red, Green & Blue) LED lighting has a much lower luminosity and is often used for 'mood type' lighting therefore, we suggest reducing the chart output figures by 50-75% dependent on whether single or multiple colours are used.

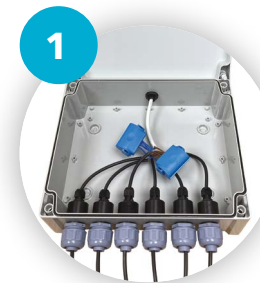


NEW

Constant Voltage Range

Introducing a new 24V Constant Voltage lighting system for 2023 with detachable faceplate - all lights will have facility to swap LEDs (onsite) to replace or update to a static colour!

- ✓ Drivers no longer required
- ✓ Choice of warm and cool white
- ✓ Easy to swap LEDs
- ✓ Choice of any static colour
- ✓ No need to replace complete light
- ✓ DMX compatible
- ✓ Laboratory Tested



DRIVERS ARE NO LONGER REQUIRED



DETACHABLE FACEPLATE SO YOU CAN...



...REPLACE THE LED ONSITE

WT1 Push-Fit 2" Medium Pool Light

85MM DIA FASCIA - CONSTANT VOLTAGE

The WT1 push fit LED lamp offers high lumination set in an extremely elegant flush fitting housing with a 316L stainless steel face.

The WT1 offers 100% controllability, near zero heat projection and extreme reliability. Standard stock colour = Cool White. Warm White made to order.

Optional: Spa Niche available



SUITABLE FOR:

- Concrete Pools Only
- White or Static Colour

Now with Replaceable LEDs
No Need for Drivers

PRODUCT DETAILS

Model	WT1 Concrete		
White	(5700K Cool White) (3000K Warm White) - 6W	White Cable	2-Core 0.5mm ² wire size, 16/0.2mm
White Lumens	(990lm Cool) (750lm Warm)	Static Colour Cable	2-Core 0.5mm ² wire size, 16/0.2mm
Static Colour	Red 400lm Green 550lm Blue 350lm	Driver	NOT REQUIRED
Current	24V DC Constant	Light Coverage	3-5 sqm (see lighting chart)
Cable Dia.	6mm	Fixing Method	Push-fit into 2" ABS Pipe

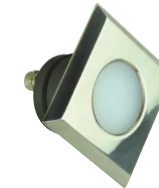
WT1.5 Push-Fit 1.5" Medium Pool Light

85MM DIA FASCIA - CONSTANT VOLTAGE

The WT1.5" push fit LED lamp offers high lumination set in an extremely elegant flush fitting housing with a 316L stainless steel face.

The WT1.5" offers 100% controllability, near zero heat projection and extreme reliability. Standard stock colour = Cool White. Warm White made to order.

Option: Square plate (non-stock item)



SUITABLE FOR:

- Concrete Pools Only
- White or Static Colour

Now with Replaceable LEDs
No Need for Drivers

PRODUCT DETAILS

Model	WT1.5 Concrete		
White	(5700K Cool White) (3000K Warm White) - 6W	White Cable	2-Core 0.5mm ² wire size, 16/0.2mm
White Lumens	(990lm Cool) (750lm Warm)	Static Colour Cable	2-Core 0.5mm ² wire size, 16/0.2mm
Static Colour	Red 400lm Green 550lm Blue 350lm	Driver	NOT REQUIRED
Current	24V DC Constant	Light Coverage	3-5 sqm (see lighting chart)
Cable Dia.	6mm	Fixing Method	Push-fit into 1.5" ABS Pipe

WT2 Thread-Fit Concrete Medium Pool Light

106MM DIA FASCIA - CONSTANT VOLTAGE

Manufactured to the same specification as the WT1 the WT2 has an in-built external thread to fit any 1.5" BSP threaded inlet.

Offering high lamination and an elegant fluted, 316L stainless steel face. Standard stock colour = Cool White. Warm White made to order.



SUITABLE FOR:

- Concrete Pools Only
- White or Static Colour

Now with
Replaceable
LEDs
No Need
for Drivers

PRODUCT DETAILS

Model	WT2 Concrete		
White	(5700K Cool White) (3000K Warm White) - 6W	White Cable	2-Core 0.5mm ² wire size, 16/0.2mm
White Lumens	(990lm Cool) (750lm Warm)	Static Colour Cable	2-Core 0.5mm ² wire size, 16/0.2mm
Static Colour	Red 400lm Green 550lm Blue 350lm	Driver	NOT REQUIRED
Current	24V DC Constant	Light Coverage	3-5 sqm (see lighting chart)
Cable Dia.	6mm	Fixing Method	Screw-fit 1.5" BSP Inlet

WT2 Thread-Fit Liner Medium Pool Light

87MM DIA FASCIA - CONSTANT VOLTAGE.

An adapted version of the WT2, this light has been designed to fit any 1.5" BSP threaded liner faceplate inlet.

All Liner WT2 are supplied with a complimentary ABS silver coloured Certikin liner faceplate. Standard stock colour = Cool White. Warm White made to order.

Certikin grey faceplate (supplied) for Liner Inlet



SUITABLE FOR:

- Liner Pools Only (Certikin type inlet)
- White or Static Colour

Now with
Replaceable
LEDs
No Need
for Drivers

PRODUCT DETAILS

Model	WT2 Liner		
White	(5700K Cool White) (3000K Warm White) - 6W	White Cable	2-Core 0.5mm ² wire size, 16/0.2mm
White Lumens	(990lm Cool) (750lm Warm)	Static Colour Cable	2-Core 0.5mm ² wire size, 16/0.2mm
Static Colour	Red 400lm Green 550lm Blue 350lm	Driver	NOT REQUIRED
Current	24V DC Constant	Light Coverage	3-5 sqm (see lighting chart)
Cable Dia.	6mm	Fixing Method	Screw-fit 1.5" BSP Inlet

WT3 Push-Fit Small Spa/Step Light

55MM DIA FASCIA - CONSTANT VOLTAGE

The WT3 light has been designed to light up Spa or Step areas and can be supplied with either a round or square fascia.

Standard stock colour = Cool White.
Warm White made to order.



SUITABLE FOR:

- Concrete Pools Only
- White or Static Colour

Now with
Replaceable
LEDs
No Need
for Drivers

PRODUCT DETAILS

Model	WT3 Concrete		
White	(5000K Cool White) (3000K Warm White) - 2W	White Cable	2-Core 0.5mm ² wire size, 16/0.2mm
White Lumens	(350lm Cool) (300lm Warm)	Static Colour Cable	2-Core 0.5mm ² wire size, 16/0.2mm
Static Colour	Red 150lm Green 175lm Blue 185lm	Driver	NOT REQUIRED
Current	24V DC Constant	Light Coverage	0.75 sqm (see lighting chart)
Cable Dia.	6mm	Fixing Method	Push-fit 1.25" / 37mm I/D PN12 ABS Pipe

WT4 Push-Fit Main Pool Light

130MM DIA FASCIA - CONSTANT VOLTAGE

The WT4 is ideal for new concrete pool installations. Designed to push fit into a plastic delrin housing niche (sold separately).

Standard stock colour = Cool White.
Warm White made to order.



Wall Niche (Sold Separately)

SUITABLE FOR:

- Concrete Pools Only
- White or Static Colour

Now with
Replaceable
LEDs
No Need
for Drivers

PRODUCT DETAILS

Model	WT4 Concrete		
White	(5700K Cool White) (3000K Warm White) - 10W	White Cable	2-Core 0.5mm ² wire size, 16/0.2mm
White Lumens	(2500lm Cool) (2000lm Warm)	Static Colour Cable	2-Core 0.5mm ² wire size, 16/0.2mm
Static Colour	Red 400lm Green 550lm Blue 350lm	Driver	NOT REQUIRED
Current	24V DC Constant	Light Coverage	5-7 sqm (see lighting chart)
Cable Dia.	6mm	Fixing Method	Push-fit 87mm dia Wall Niche. Sold Separately

WT5 Thread-Fit Universal Main Pool Light for Concrete or Liner Pools

150MM DIA FASCIA - CONSTANT VOLTAGE

The WT5 UNIVERSAL light is ideal for new or retro installations. Designed to screw into a dedicated 1.5" BSP Procopi Inlet (sold separately).

The WT5 can also replace Adagio PLA 100 or 170 type lights (24V transformer required). Standard stock colour = Cool White. Warm White made to order.



Wall Niche (Sold Separately)

SUITABLE FOR:

- Concrete, GRP & Liner Pools
- White or Static Colour

Now with Replaceable LEDs
No Need for Drivers

PRODUCT DETAILS

Model	WT5 Universal Concrete & Liner		
White	(5700K Cool White) (3000K Warm White) - 6W	White Cable	2-Core 0.5mm ² wire size, 16/0.2mm
White Lumens	(1200lm Cool) (1000lm Warm)	Static Colour Cable	2-Core 0.5mm ² wire size, 16/0.2mm
Static Colour	Red 400lm Green 550lm Blue 350lm	Driver	NOT REQUIRED
Current	24V DC Constant	Light Coverage	5-7 sqm (see lighting chart)
Cable Dia.	6mm	Fixing Method	Screw fit 1.5" BSP Procopi Inlet

WT5 Push-Fit Main Pool Light for Concrete Pools

150MM DIA FASCIA - CONSTANT VOLTAGE

The WT5 light is ideal for new or retro installations. Designed to push-fit into 2" ABS/PVC pipe.

Standard stock colour = Cool White. Warm White made to order.



SUITABLE FOR:

- Concrete Pools Only
- White or Static Colour

Now with Replaceable LEDs
No Need for Drivers

PRODUCT DETAILS

Model	WT5 Concrete		
White	(5700K Cool White) (3000K Warm White) - 6W	White Cable	2-Core 0.5mm ² wire size, 16/0.2mm
White Lumens	(1200lm Cool) (1000lm Warm)	Static Colour Cable	2-Core 0.5mm ² wire size, 16/0.2mm
Static Colour	Red 400lm Green 550lm Blue 350lm	Driver	NOT REQUIRED
Current	24V DC Constant	Light Coverage	5-7 sqm (see lighting chart)
Cable Dia.	6mm	Fixing Method	Push-fit 2" - pipe

STAINLESS LED LIGHTING

Kaiflex Poolside Junction Box

SUITABLE FOR INDOOR OR OUTDOOR APPLICATIONS.

Designed to keep poolside light cabling to a minimum with easy gel filled WAGO connections.

Simply connect a 24v DC supply using 2mm SWA armoured cable to the IP66 rated box driver installed beneath paving surround and placed central to the poolside. Then use our 0.5" IP68 rated flexible conduit to connect to the back of light niches or wall fitting.

ALL JUNCTION BOXES INCLUDE:

- IP68 conduit gland connectors
- Gel filled terminal blocks
- Silica gel pouch
- Reducing bushes from 2" to 0.5"
- 20 mm gland IP68 for SWA connection
- 16 mm gland IP68 for regular 2 mm flex

IP66 BOX DIMENSIONS:

6 way	290mm	240mm	110mm
5 way	290mm	240mm	110mm
4 way	240mm	190mm	110mm
3 way	240mm	190mm	110mm
2 way	240mm	190mm	110mm

Poolside Deck Box Cover Trays to suit 15-50mm tile/stone finish



LEARN MORE

Click to view
installation
method



✓ Simple connection
NO drivers required!

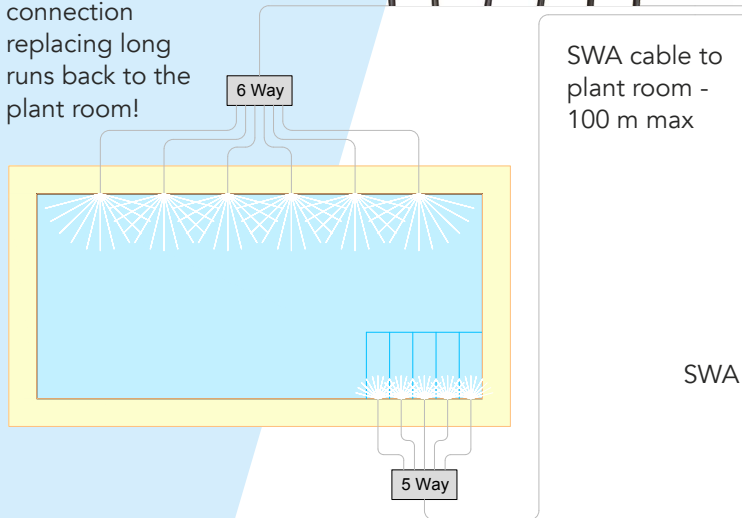
Gel filled terminals
With WAGO easy snap
wire connectors



Kaiflex flexible
conduit (max 7 m)



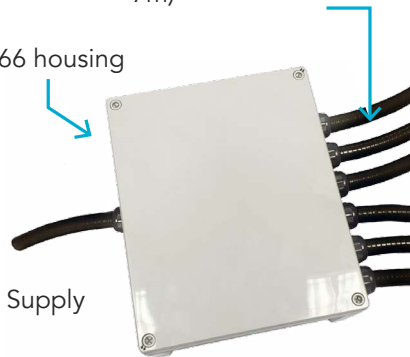
Poolside
connection
replacing long
runs back to the
plant room!



SWA cable to
plant room -
100 m max

Kaiflex conduit
connection (max length
7m)

IP66 housing



SWA 24v DC Supply

Replacement LEDs

CONSTANT VOLTAGE



Now with
Replaceable
LEDs
No Need
for Drivers

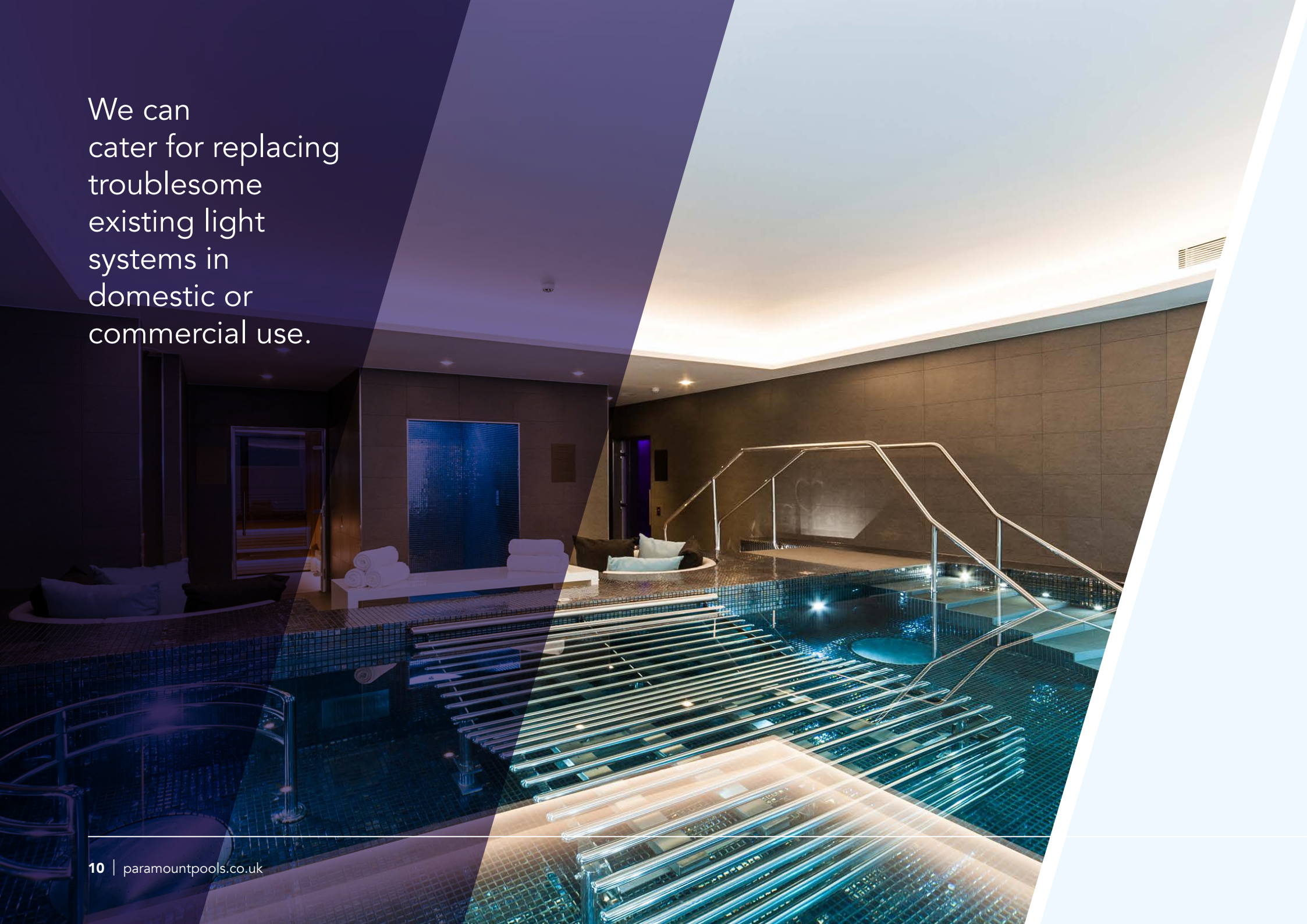


[LEARN MORE](#) Click to
watch video



Replacement LED
available in warm, cool or
any static colour!

We can cater for replacing troublesome existing light systems in domestic or commercial use.





A light system that can be controlled and adapted to suit your customers needs. Choose from conventional on/off control, touch pad patrice, remote control or WiFi operation.



PARAMOUNT
POOL PRODUCTS

TO FIND YOUR NEAREST DEALER PLEASE VISIT OUR WEBSITE

e: sales@paramountpools.co.uk | w: paramountpools.co.uk

WARRANTY

- Five Year Pro-Rated Warranty - Watertec LED Lights. In the first (2) years of the warranty period, Paramount Pools Ltd will repair or replace lights without charge at our discretion.
- Freight charges and dealer labour is not included.
- During the third (3) through the fifth (5) year of the warranty period, the cost of the replacement cover will be reduced by 1/60 for each remaining month in the warranty period.
- Calculation to begin from original documented installation or invoice date.
- Water-tec products can be used in Salt Water pools. However, they will not be responsible for any salt corrosion or staining issues.
- It is imperative that all pools are fully Earth Bonded and a Sacrificial Anode installed.
- Regular maintenance and salt dosages must be maintained within the manufacturer's guidelines

All rights reserved. This document is the property of Paramount Pools Limited and shall not be distributed, reproduced except with prior and express written permission.

FRONT COVER IMAGE: Pool By Design