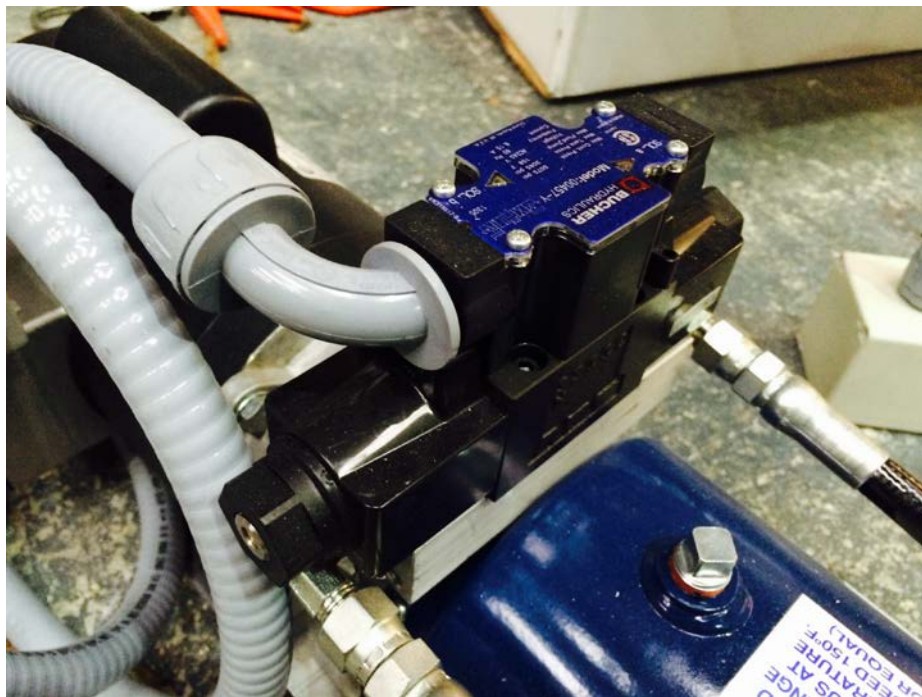
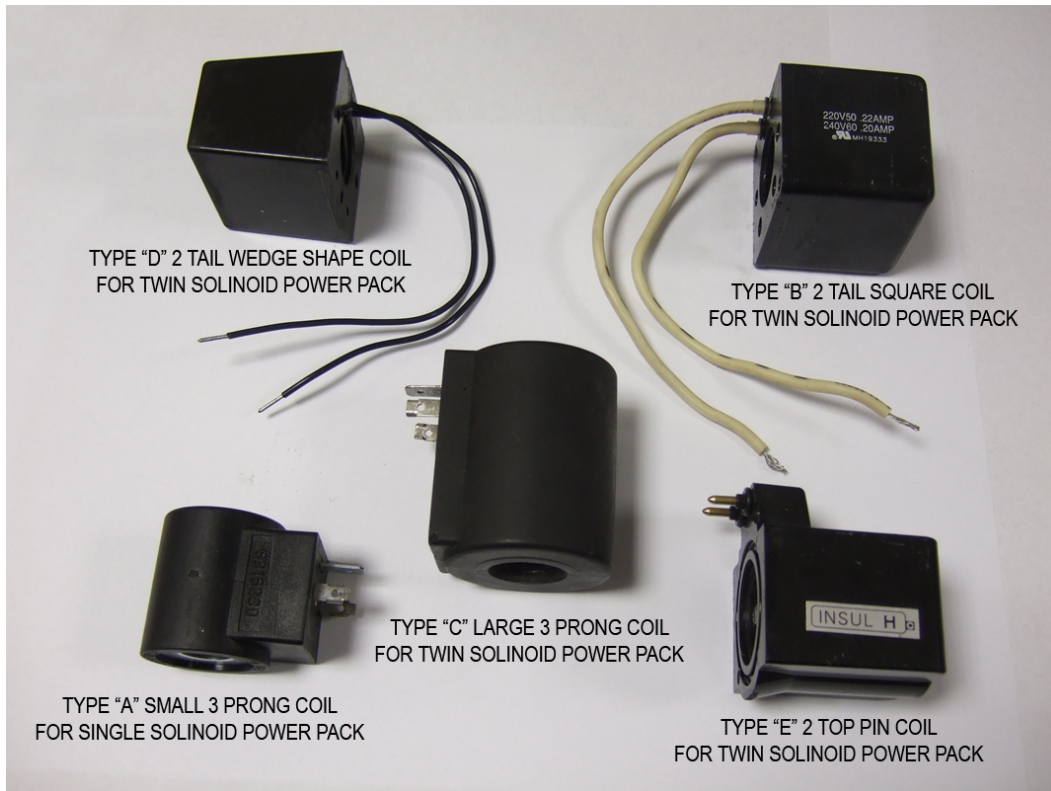


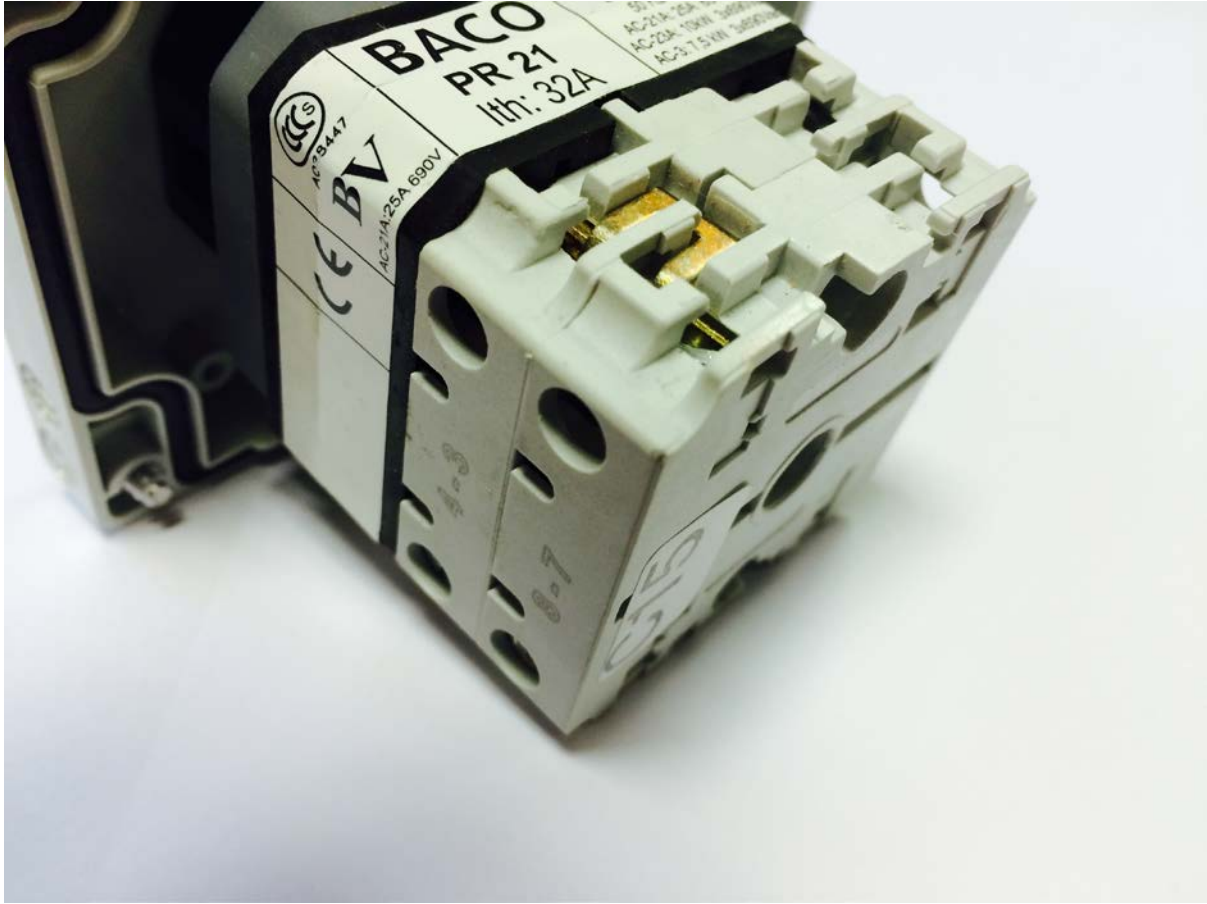
Aquamatic solenoids

The solenoids used on the covers have varied over the years, these pictures should help you identify the model you have.



This is a type E solenoid fitted.

Aquamatic Key-switch



This is the standard key-switch fitted since 2007, the older model is very similar.

You will see there are numbered points/terminals from 1 to 8. To replace just use the same numbered terminals for the wires.

Refer to the Aquamatic wiring diagram for more information on fitting.