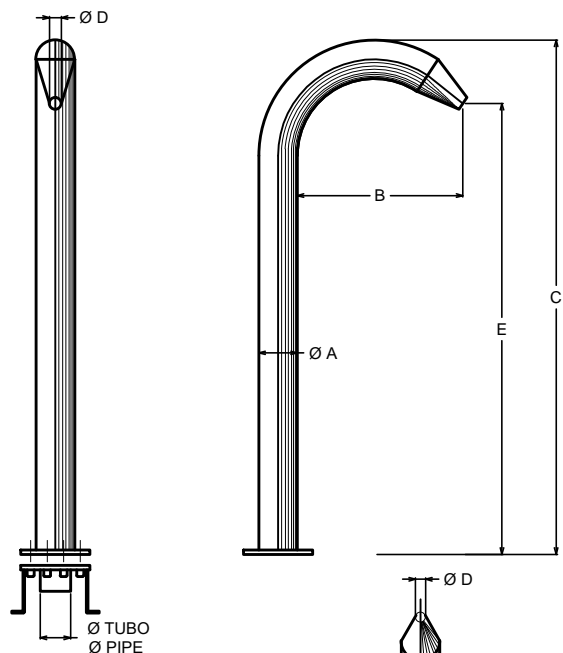


# FONTANA INOX AD UGELLO

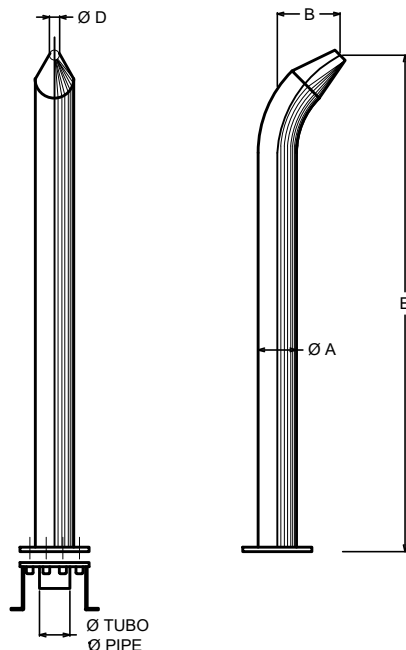
## STAINLESS STEEL NOOZLE FOUNTAIN



TIPO  
TYPE **U**

CODICE CODE	TIPO TYPE	Ø A	B	C	Ø D	E	Ø TUBO Ø PIPE	PORTATA FLOW RATE	POMPA PUMP
71 103	U - 60	60	395	1040	27	900	mm 50	15 mc/h	1.5 HP
71 104	U - 89	89	490	1180	33/42	1000	mm 75	32 mc/h	2.5 HP
71 105	U - 114	114	640	1420	42/48	1200	mm 75	38 mc/h	3.0 HP
71 086	UD-60	60	165	--	27	900	mm 50	15 mc/h	1.5 HP
71 106	UD-89	89	200	--	33/42	1000	mm 75	32 mc/h	2.5 HP
71 107	UD-114	114	240	--	42/48	1200	mm 75	38 mc/h	3.0 HP

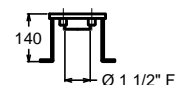
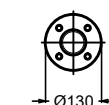
TIPO  
TYPE **UD**



### CONTROFLANGIA DA CEMENTARE CONCRETE COUNTERFLANGE

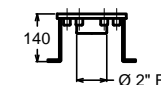
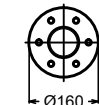
PER FONTANE  
FOR FOUNTAINS

CODICE / CODE  
71 103  
71 086



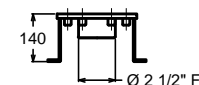
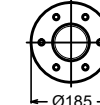
PER FONTANA  
FOR FOUNTAIN

CODICE / CODE  
71 104  
71 106



PER FONTANA  
FOR FOUNTAIN

CODICE / CODE  
71 105  
71 107



COSTRUITA IN ACCIAIO INOX AISI 316 L - V4A  
COMPLETA DI ANCORAGGIO DI BASE

MANUFACTURED WITH AISI 316 L - V4A STAINLESS STEEL  
COMPLETE WITH FLANGE FOR FIXING TO THE PAVING