



PARAMOUNT  
POOL PRODUCTS

# POOL SAFETY COVERS



AQUAMATIC  
POOL SAFETY COVERS

WORLDWIDE  
LEADERS





Inwall Cover System  
Colour: Charcoal Grey

Our patented design  
will guarantee  
you trouble free  
maintenance and  
increased power  
performance



All pools in this country need to have some kind of a cover, mainly for heat retention purposes, preventing water evaporation by 95%, chemical loss and to keep debris out of the pool.

Traditionally a Solar Blanket and a Winter Debris cover are used, both requiring manual effort to put on or take off but with Aquamatic all you need is the turn of a key.

An Aquamatic cover also gives you the added safety benefit that nothing can enter the pool unless you turn the key, a welcome thought to parents and pet owners especially.

Not all automatic swimming pool covers are built to the same standards. Aquamatic have dedicated years of investment to give you the ultimate system at an affordable price.

This brochure will explain all the reasons why you should make the right choice and join over 45,000 others worldwide in owning the very best automatic pool cover system that money can buy.

## CONTENTS

Reasons To Buy...	4
Outdoor Pools	6
Indoor Pools	9
How Our Covers Work	10
Installation Options	12
Lid Housing Options	14
Composite Wood Colour Options	20
Fabric Colours & Information	22
Why You Need Aquamatic	24
Why Paramount Pools	26

# REASONS TO BUY...



## A PATENTED DESIGN

The Aquamatic cover is driven by hydraulic fluid not electricity. Our patented design will guarantee you trouble free maintenance and increased power performance.



## EXTENSIVE WARRANTY

One of the most reliable and quickest covers on the market and with a 20 year limited warranty on the drive mechanism, you can see why Aquamatic is the popular choice.



## ACCREDITED

The Aquamatic cover system complies with the Conformity Assessed (UKCA) conformity certificate within the scope of the Supply of Machinery (Safety) Regulations and making sure it meets all of the essential health and safety requirements which is applicable for products sold within Great Britain replacing the CE mark.





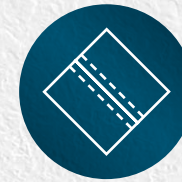
## INGENIOUS & TROUBLE FREE

An ingenious trouble free patented slider system combined with a compensator ensures that the cover closes squarely every time.



## VERSATILE & DIFFERENT

Aquamatic is the most versatile cover, enabling you to house the cover either above or below ground with a combination of three different types of track; flush, surface and inwall track.



## HIDDEN STITCHING

Aquamatic uses a unique overlap welding method to ensure the underside stitching is protected and not visible.



## PEACE OF MIND

An extra safety measure to ensure peace of mind with young children.



# OUTDOOR POOLS

No other pool cover gives you more options than Aquamatic. Whatever the size or shape of your outdoor pool, we can provide you with a safety cover system that will suit both your style and budget.

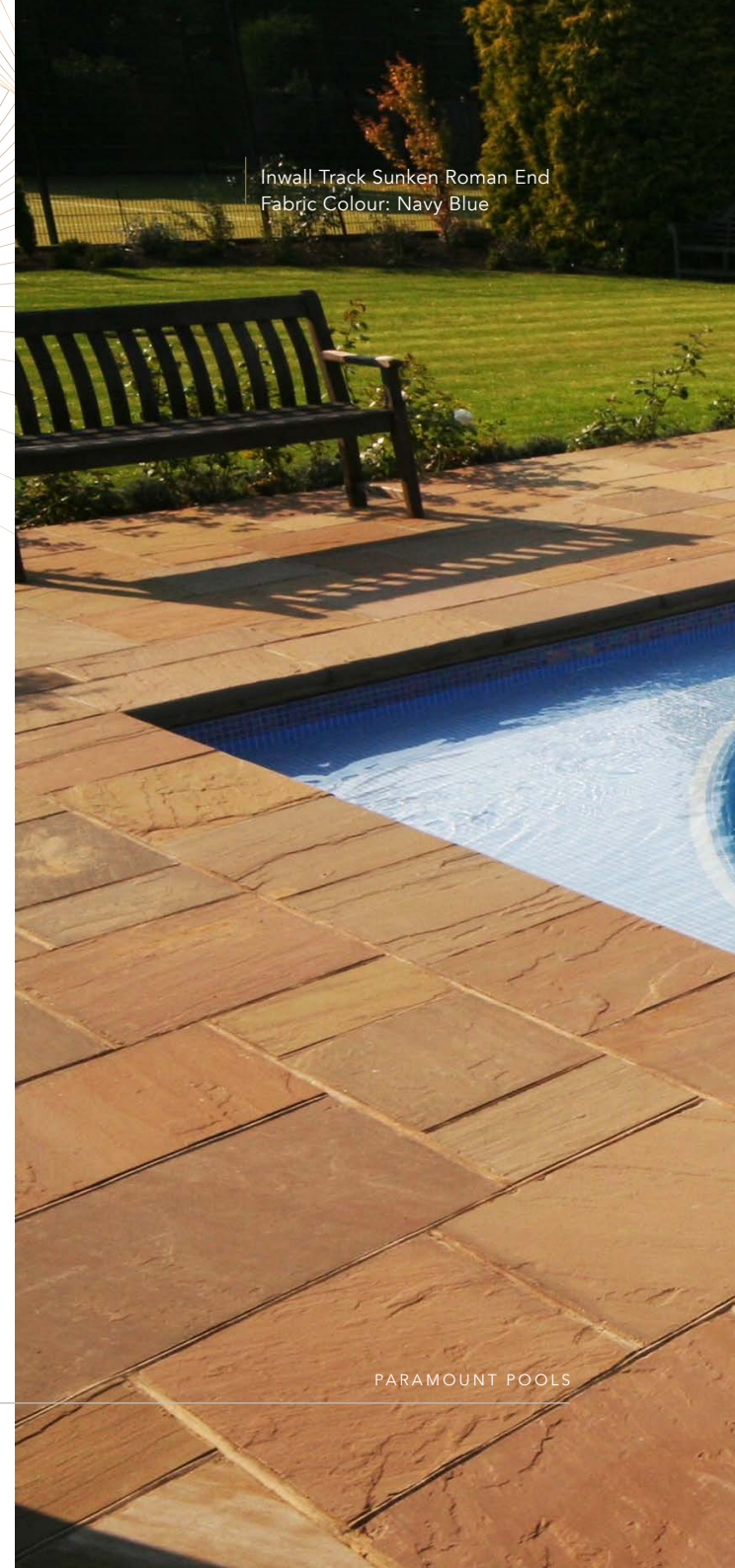
Aquamatic cover systems are ideal for installing in outdoor environments due to the pool being completely sealed making the pool safe and free from unwanted debris.

The cover will also turn your pool into a large passive solar collector and will help raise the pool water temperature, cutting down on evaporation loss to substantially reduce running costs.

Careful consideration should be taken if you are considering purchasing a 'Slatted' type cover, please bear in mind that this type of cover is NOT classed or has been approved as a safety cover.

More maintenance will be required to descale the slats and debris removal from surrounding trees for this type of cover system.

Inwall Track Sunken Roman End  
Fabric Colour: Navy Blue



PARAMOUNT POOLS





If you have an  
outdoor pool we  
have the cover  
for you.





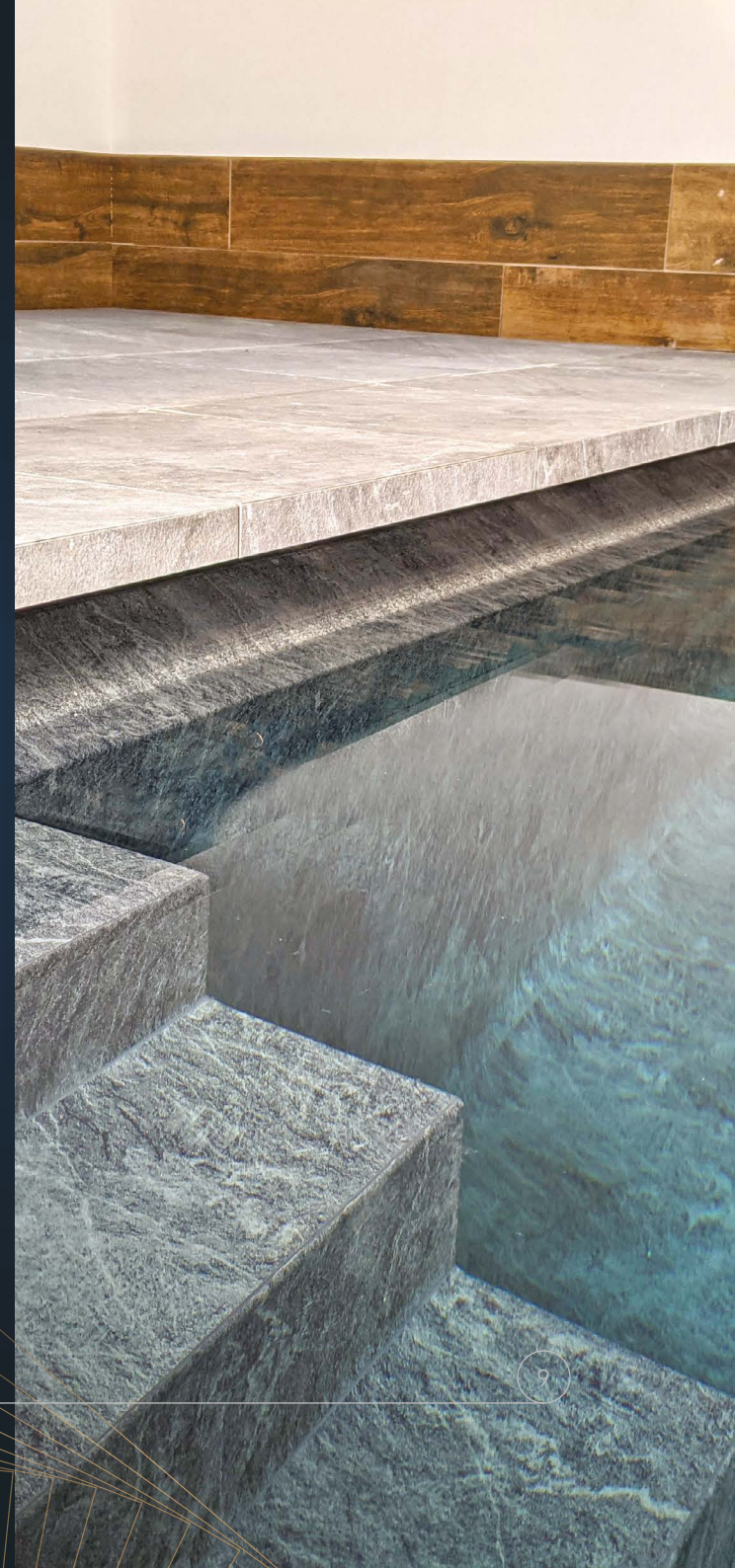


# INDOOR POOLS

Any type of pool construction that is built indoors has humidity, condensation and safety issues. Without question, an Aquamatic safety cover system installed on an indoor swimming pool instantaneously prevents these problems arising when the pool is not in use.

Applying an Aquamatic cover on an indoor pool is like placing a lid on the pool, it completely seals the swimming pool. Cutting down on humidity and condensation levels substantially reduce running costs.

If you are considering purchasing a 'Slatted' type cover, please bear in mind that this type of cover is NOT classed or been approved as a safety cover. In addition, approximately 20% evaporation loss occurs in a slatted system due to the gaps that are formed at each joint!





# HOW OUR COVERS WORK

A PVC reinforced fabric is attached to an aluminium leading edge bar that spans the width of the pool. A unique 'Slider' mechanism is attached to the leading edge and this slides through aluminium tracking placed either side of the pool.

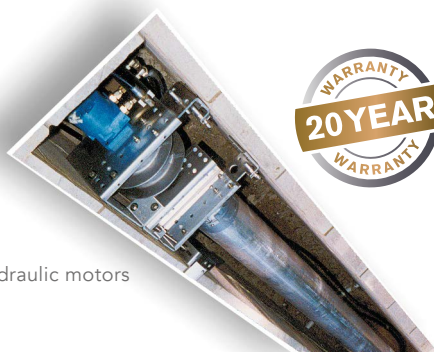
A marine quality nylon cable cord is also attached to the fabric and threads up and down the tracks onto a 'Drive Mechanism', which activates a pair of cast aluminium reels. The Drive Mechanism is operated by a key operated switch. The cast aluminium reels wind up the nylon cables which pulls the fabric through the tracking to close the cover.

To remove the cover the Drive Mechanism simply activates the 'Roller Tube', this winds up the fabric on to the tube just like a conventional reel system used for Solar Covers.

Safety Remote Operated Key Switch (Stop, start or reverse cover at any time)



TWO hydraulic motors



PARAMOUNT POOLS





## WHAT 'POWERS' IT?

A 'Powerpack' hydraulic pump that pumps hydraulic oil through two 9mm/155 BAR rated hoses which are connected to TWO hydraulic motors via a reverse flow manifold.

Each motor independently activates either the 'Reel System' or the 'Roller Tube' and because there are no clutches involved a smooth and reliable service is delivered time after time!

There is no electrical supply required to power the drive mechanism. Therefore, in the event that the pit housing is flooded, there will be no costly repair bills as all the components in the pit area are unaffected by water.



# INSTALLATION

The Aquamatic Safety Cover can be applied to any domestic pool size or shape. By offering a choice of above or below the surface mounting it offers you either a cover which disappears into a surface mounted cabinet with no disruption to existing paving; or, by making a pit construction, allows for the cover to be stored below deck level.

## ABOVE GROUND INSTALLATION

An above Ground Installation is ideal for situations where the surrounding deck area, e.g. paving, is not to be disturbed and saves on the inconvenience and added expense of not having to build a below ground pit housing.

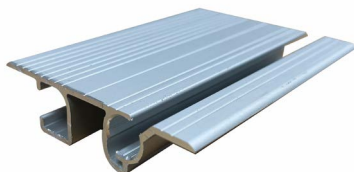
The cover can be retracted into either a flush or surface mounted tracking into an above ground housing that is fixed to the surface of the surrounding deck area (a good solid base is required).

## TRACK OPTIONS

Top track



Flush Track



Flush Track  
White Polymer Bench Housing  
Fabric Colour: Royal Blue







## HOUSING - POLYMER OR COMPOSITE WOOD

Two types of maintenance free materials are available for creating a bench housing.

### POLYMER

Made from 100% virgin, high impact, Polystyrene Resin which is available in six different colours. Very durable, lightweight, and require no maintenance.

### COMPOSITE WOOD

Unlike pure wooden decking which needs to be maintained, stained and sealed regularly, composite decking is made from a composite of recycled plastics and real wood fibres that is very low maintenance and resistant to stains, mould, mildew, cracking, splitting and warping. Available in five different colours. See page 20 for more detail

All bench housings are can take the weight of several people (NB. not to be used as a diving platform).



White

Buff

Charcoal

Terracotta





## BELOW GROUND INSTALLATION

The cover is retracted through either top, flush or inwall mounted tracking into a storage pit, below deck level. Pit Construction (330/405mm dependent on cover size) is made either by using number 7 Neuton concrete blocks, no RSJ lintel is required.

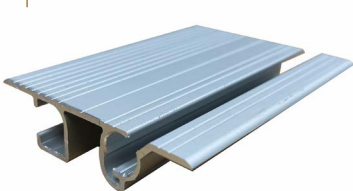
Inwall tracking enables you to conceal the tracking extrusion within the parameters of the pool wall. The cover is retracted through the inwall tracks and enters the pit housing over the pool wall structure, not the coping edge.

## TRACK OPTIONS

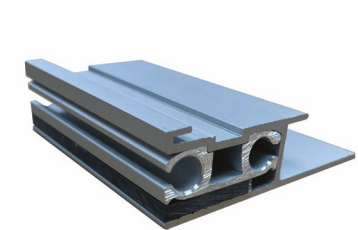
Top track



Flush Track



Concrete Inwall Track



Liner Inwall Track



## LID HOUSINGS - OPTIONS

Three different lid options are available for below ground installations. We recommend talking to your dealer to discuss the merits of each one and the suitability for your type of pool construction. We also have the following lids on display at our head office.

Composite Decking Lid page15

Track Level Stone Lid page 17

Hidden Leading Edge Stone Lid page 18

## COMPOSITE DECKING LID

### Suitable for: Liner & Concrete Pools

Unlike pure wooden decking which needs to be maintained, stained and sealed regularly, composite decking is made from a composite of recycled plastics and real wood fibres that is very low maintenance and resistant to stains, mould, mildew, cracking, splitting and warping. Available in five different colours. See page 20 for more details.

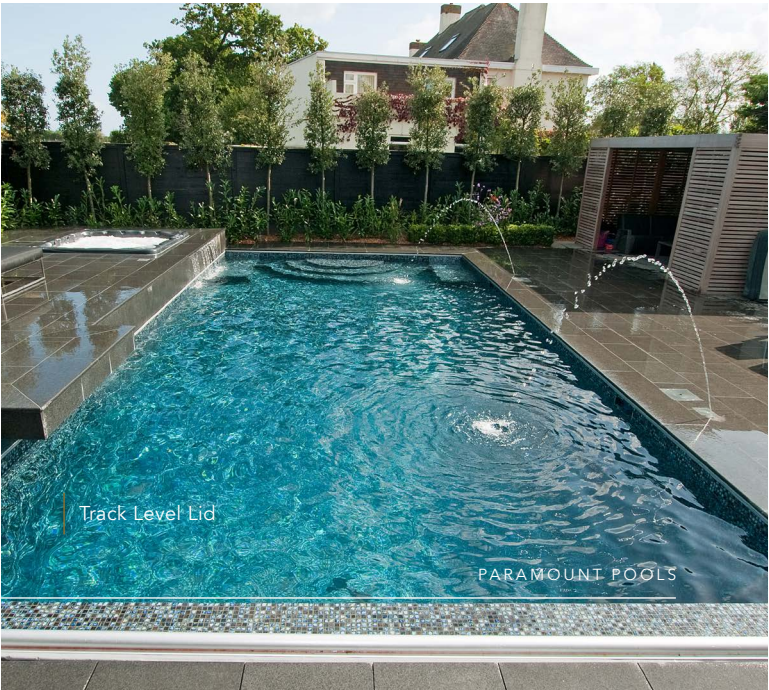




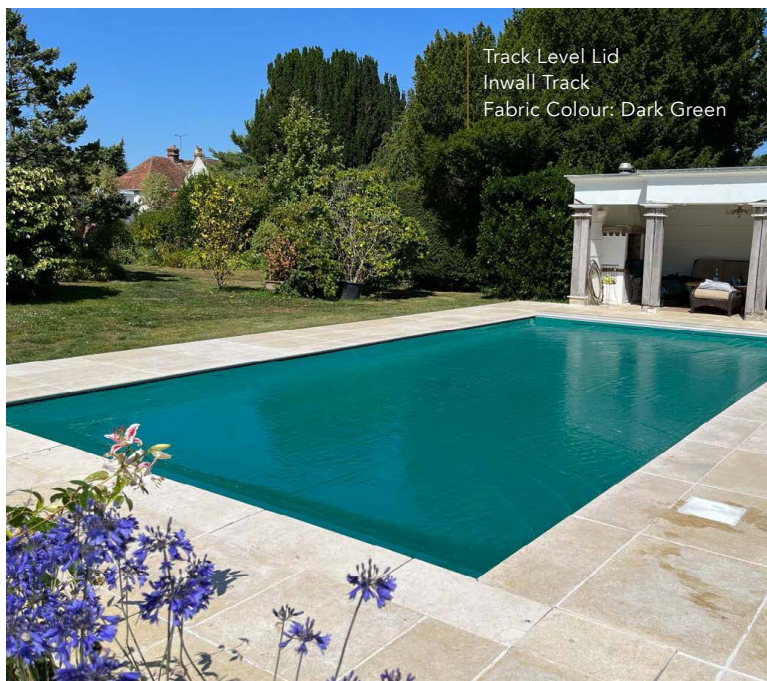
Composite Wood Lid  
Inwall Track

AQUAMATIC POOL SAFETY COVERS

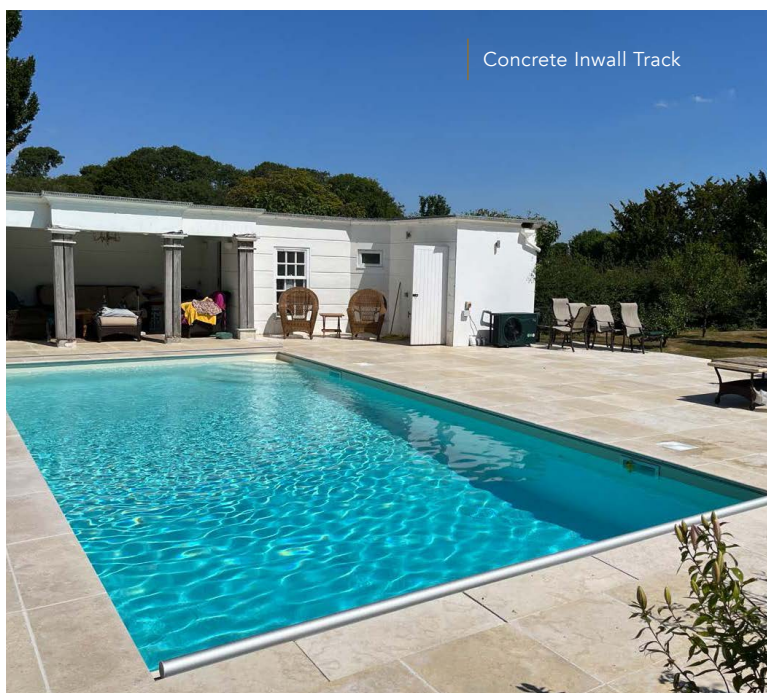




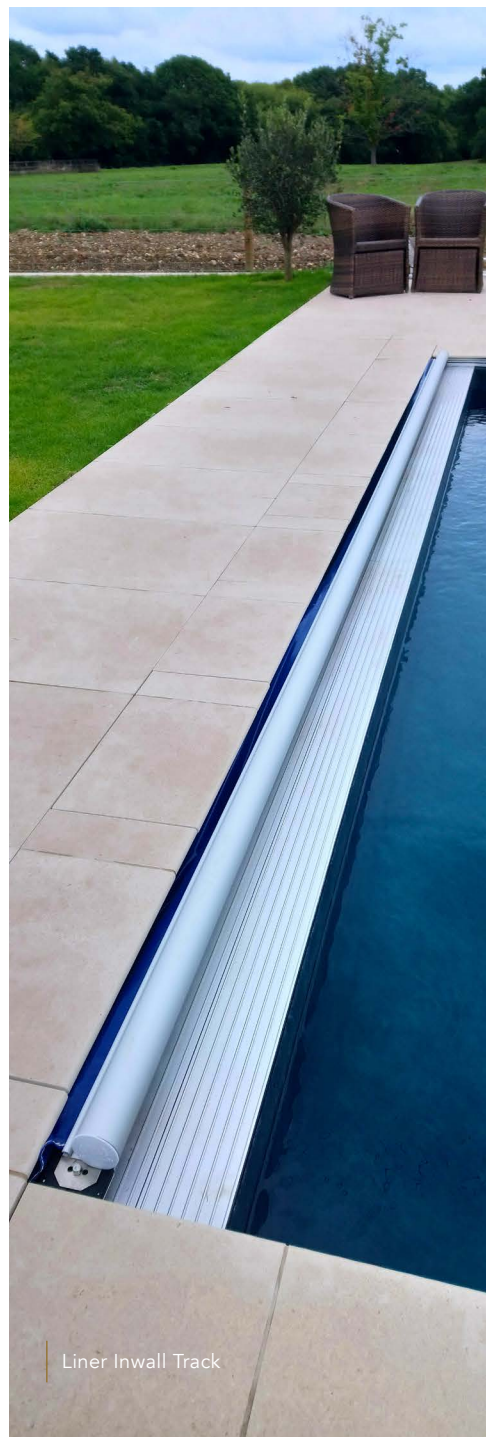




Track Level Lid  
Inwall Track  
Fabric Colour: Dark Green



Concrete Inwall Track



Liner Inwall Track

## TRACK LEVEL LID - STONE

### Suitable for: Liner & Concrete Pools

Comprising of aluminium pan trays supported by 306 stainless steel hangers and support brackets spaced every 600mm. The lid is designed to take light foot traffic with minimal movement.

Whatever stone depth (10-50mm max.) is applied to the top of the inwall track (liner or concrete) must be applied to the tray lid system.

600 x 300mm pans are supplied as standard and require a 300mm width stone to prevent unsightly cuts and enable accessibility.

Note - This lid system covers the pit housing only. The top of the dividing pool wall is exposed and finished in mosaic, stone or decorative aluminium capping for liner pools.

**To view the cover in action, click the buttons below**

[LEARN MORE](#)

[LEARN MORE](#)

[LEARN MORE](#)



## HIDDEN LEADING EDGE SYSTEM - STONE

Available for concrete and onsite PVC liner pools only, heavy duty stainless steel pans span the pit housing and pool dividing wall thus hiding the leading edge bar when viewed from above, incurring minimal lid deflection when foot traffic is applied.

Note - This lid system cover requires 600 x 600mm stone/tile application. Composite wood decking can also be applied.

**To view the cover in action, click the buttons below**

[LEARN MORE](#)

[LEARN MORE](#)

[LEARN MORE](#)









# COMPOSITE WOOD



## POLYMER

PAll composite wood finishes for lid housings and surface mounted benches are made from Neo Timber® Unlike pure wooden decking which needs to be maintained, stained and sealed regularly, composite decking is made from a composite of recycled plastics and real wood fibres that is very low maintenance and resistant to stains, mould, mildew, cracking, splitting and warping.

The advantages of using composite decking vs wood, makes Neo Timber® a perfect choice for our lid system and pool surrounds.

## BENEFITS OF NEO TIMBER

### Very Low Maintenance

All our boards are hard-wearing and easy to maintain.

### No Rotting Or Warping

A unique material composition resistant to the damaging effects of moisture build-up.

### 25 Year Residential Warranty

High-quality, long-lasting products with a 25-year warranty

### 10 Year Commercial Warranty

A solid 10-year commitment of durable decking for commercial applications.

### No Treatment Required

No need to paint, oil, stain or seal the deck boards.

### No Splintering

The material composition ensures long-term safety and assurance.

### Strength And Durability

Unlike timber, our boards retain their strength and durability throughout their life.

### Eco-Friendly

A long-lasting material composed of a blend of recycled plastic and wood fibres.



LEARN MORE

To find out more click here

## NEO TIMBER

Enclosed in a four-sided, protective capping, the Advanced range provides users with the guarantee of superior resistance to the hazards that come with everyday outdoor life – no matter the season. An affordable, lightweight capped composite decking has arrived and it's guaranteed to look right at home in your garden.

Grey

Teak

Chocolate

Charcoal

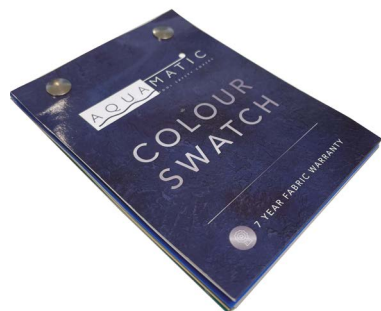
Antique



AQUAMATIC POOL SAFETY COVERS







# CHOOSING YOUR COVER



All our cover fabrics are manufactured and assembled under licence by Aquaflex Ltd.

Having the cover material cut and prepared in the UK has the added benefit of a quicker manufacturing time and reduced costs.

The cover fabric used for all UK installations is a (BS3424/5A) 630g/m2 flexible plasticised PVC material. The fabric has a high gloss lacquer on both sides and contains a high tensile polyester scrim reinforcing layer to enhance tear strength. This lacquered finish

will also enable the fabric to be cleaned far easier compared to other non-lacquered fabrics.

## PLEASE NOTE

Colours depicted are 90% accurate; they are as close as the printing process allows. Samples are available on request.

Other colours available, subject to surcharge.

## COLOUR OPTIONS

5032 - Navy Blue

5001 - Royal Blue

5029 - Light Blue

6001 - Dark Green

6194 - Sage Green

1003 - Stone

7244 - Charcoal Grey

7024 - Dark Grey

7193 - Light Grey



# LIFE EXPECTANCY AND CHEMICALS

Aquamatic fabric material has a life expectancy of approximately 7-10 years and all have a seven year pro-rated warranty.

Apart from UV and wear & tear, the most common cause for a reduced fabric life span is the incorrect use of pool chemicals i.e. continuation of high chlorine levels or 'Shock Chlorine Treatments'. Having an Aquamatic cover substantially reduces the amount of chemical required to sanitise the pool water as approximately two thirds of all organic matter is prevented from entering the pool. The cover also restricts up to 90% of light from entering the pool thus preventing algae from growing!

Normal chlorine levels required with an Aquamatic cover can be reduced to 1ppm. If a 'shock treatment' is required, we recommend that a 'Non-Chlorine Shock Treatment' is used.

All Aquamatic covers can withstand temperatures from -30 / +70°C

## AN AQUAMATIC COVER IS NOT CREASE FREE!

It is impossible for the fabric material that covers the pool to be crease free. The cover material is manufactured to the exact width of the track to track measurement plus, another 75-100mm of excess material. The excess material is to allow the cover to sit correctly on the water surface. Therefore, when applying a cover to the roller tube (the same width as the track to track dimension) a number of folds have to be made, this results in creases forming in the cover at the pit/surface housing end. The amount and length of creases differ on every Aquamatic installation, this is dependant on size, shape etc.



# WHY YOU NEED AQUAMATIC

## DUAL HYDRAULIC MOTORS

**EXCLUSIVE!** The fundamental difference between Aquamatic and other safety cover systems available on the market today is the drive system. Aquamatic incorporate a 'dual hydraulic drive system' consisting of two independent hydraulic motors, one to close the cover and another to open the cover. Having two independent motors is substantially more powerful and therefore able to cope with the drag factor, caused by water, that is often associated with pools built in the UK. The hydraulic drive system has a 20 year pro-rata warranty.

## TRAVEL LIMIT SYSTEM

**EXCLUSIVE!** Standard equipment on the Aquamatic cover is the 'Travel Limit System' that incorporates pressure relief valves which ceases to drive the hydraulic motors when it meets an obstruction or comes to the end of its travel. When the cover touches the end of the pool it must stop. This creates fluid over-pressure causing the fluid to bypass back to a built-in reservoir which ceases to drive the hydraulic motors. This hydraulic system is unique to Aquamatic.

## RAIN WATER REMOVAL SYSTEM

Every outdoor Aquamatic cover has the option to include a built-in rain water screen mesh. Having this facility removes the necessity for the use of a cover pump every time it rains! However, if there is an excessive amount of water on the cover, a cover pump is supplied to enable this water to be removed. Throughout the winter period, we advise that a cover pump is used continuously to prevent water build up when the pool is generally not in use.

## BUILT-IN COMPENSATOR

**EXCLUSIVE!** Aquamatic cover systems are GUARANTEED to close squarely. Using a unique built-in compensator mechanism, Aquamatic is able to redistribute the fabric material whilst in operation thus guaranteeing to close the cover squarely, every time!

## REINFORCED HYDRAULIC HOSES

All hydraulic runs over 25m are automatically converted to reinforced hoses to prevent hydraulic back pressure ensuring a smooth and trouble free operation.

## COVER TREATMENT

**EXCLUSIVE!** 'Cover Treatment' is applied to the underside of the fabric material to reduce 'deck drag'. Deck Drag is the result of water or condensation collecting on the underside of the cover material, preventing free movement over hard surface areas such as paving or smooth coping stones when the cover is in operation.

Cover treatment is a result of many years experimentation with various types of mesh treatments. Aquamatic have their mesh formulated especially for their own cover system.

Cover treatment can also be applied for free form shaped pools, rectangular pools with step units either on the end or the side of the pool.

Cover Treatment in some instances, can replace the need for installing an air system that is used on a free form shaped pool i.e. large paved areas.





### BUILT IN COMPENSATOR

Make sure your cover closes squarely every time by using Aquamatic's unique built in compensator.



### OUR LIMIT SYSTEM

Aquamatic Travel Limit System makes sure your cover stops when it reaches the end of its travel or hits an obstruction.



### NO MORE COVER PUMPS

The Aquamatic screen mesh removes the necessity of a cover pump every time it rains!



### BETTER PERFORMANCE

Beware of other cover systems claiming to have a hydraulic system, many of them use only one motor incorporating a clutch/gear system that is prone to maintenance problems and lower torque performance.



### COVER TREATMENT

This patent protected system will reduce 'deck drag' and provide a smooth motion over hard surfaces such as paving or smooth coping stones.



# WHY PARAMOUNT



## ASSEMBLED IN THE UK

Paramount Pool Products have been importing the Aquamatic cover system into the UK since 1995. Due to the overwhelming demand a commercial decision was taken in 1998 to assemble each cover to order here in the UK. In addition, the fabrics are also manufactured under licence here in the UK.

Having all the component parts in stock and a fleet of installation crews enable us to offer an expedient and reliable service that we believe is unmatched within the industry.



## DEDICATED STAFF

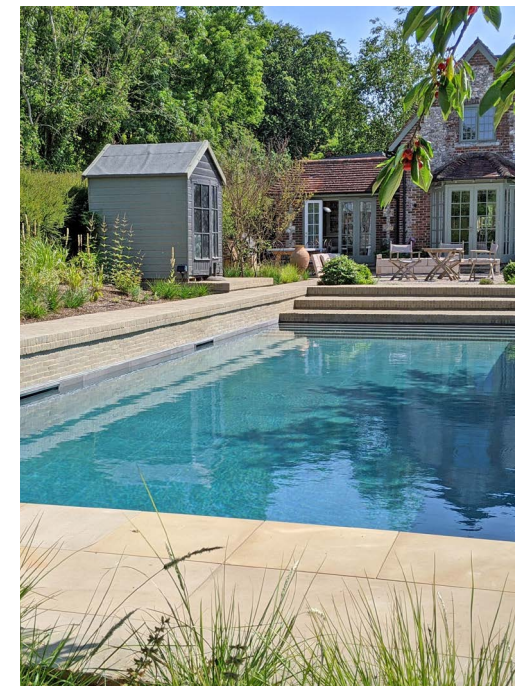
Installation, service and assembly staff are all employed by Paramount. All our staff members are subjected to a rigorous training program ensuring a premium service is delivered at all times.



## TRAINING SEMINARS

Due to the vast numbers of cover systems installed nationally, we also have a network of approved dealers who attend our in-house training seminars to enable them to install, service and support all your requirements.





## SHOWROOM

We have a dedicated showroom facility in Hampshire, available by appointment through your dealer, so you can view and see various models in operation.







## HOW SAFE IS SAFE?

Aquamatic cannot guarantee that your pool is 100% safe, no cover system can. Although Aquamatic is a proven and tried system, it still relies on the home owner to keep the pool covered when not in use. As any parent knows, having children at whatever age or however well disciplined they are, or as vigilant as you are as a parent, you can never guarantee their safety or prevent an accident from occurring.

Installing the Aquamatic cover will give you an added safety factor and minimise the risk that owning a pool can have in endangering the lives of family and friends. If you decide to purchase a safety cover, please bear in mind that although the Aquamatic Cover System can sustain the weight of many people, it is not a toy. Children or Adults should never be enticed to walk or play on a cover.

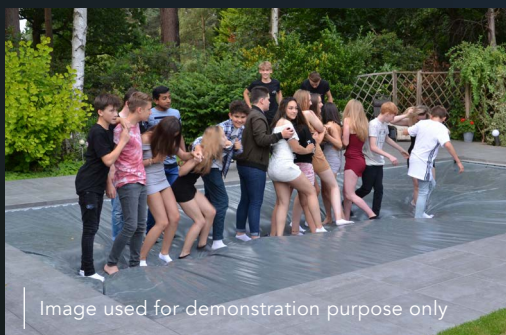


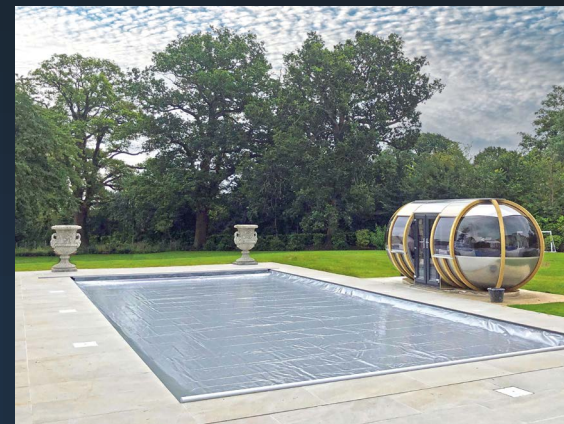
Image used for demonstration purpose only

## MAINTENANCE

An Aquamatic safety cover, like a car, is NOT a maintenance free product. Depending on the location and use of the cover will determine how much maintenance is required.

Maintaining your pool cover system throughout the season is generally limited to flushing out the track guides with water and lubricating with Silicone spray on a regular basis.

We recommend servicing your cover annually as depicted the homeowners manual, wearable parts such as Sliders, Pulley Bearings and End Stop Guides can be changed either by the home owner, dealer or an Aquamatic engineer. As with all things, the greater the care, the longer the life and an Aquamatic cover system is no exception.



All rights reserved. This document is the property of Paramount Pools Limited and shall not be distributed, reproduced except with prior and express written permission.

Sole UK Distributor: Paramount Pool Limited Products  
To find your nearest Aquamatic dealer or to view our online gallery visit our website [www.paramountpools.co.uk](http://www.paramountpools.co.uk)