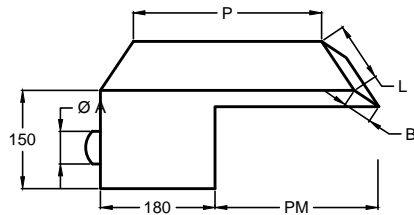
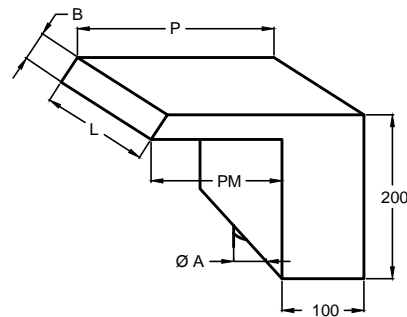


FONTANE A CASCATA (da inserire nella muratura)

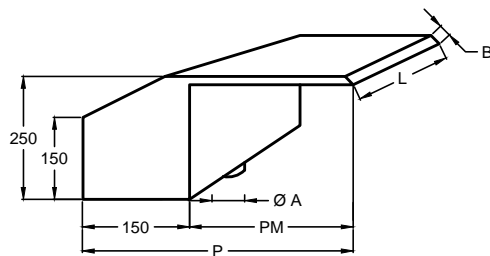
DECORATIVE FALL FOUNTAINS (to insert into the concrete)



TIPO ORIZZONTALE
HORIZONTAL TYPE



TIPO VERTICALE STRETTA
VERTICAL TIGHT TYPE



TIPO VERTICALE STANDARD
VERTICAL STANDARD TYPE

| TIPO - TYPE | | COD. | L | P | PM | B | Ø A | PORTATA RANGE |
|-------------------------------------|--------|--------|------|-----|-----|----|----------|---------------|
| | | | mm | mm | mm | mm | mm | mm |
| ORIZZONTALE HORIZONTAL | OR 33 | 73 101 | 330 | 460 | 280 | 8 | 1 1/2" F | 10 mc/h |
| | OR 50 | 73 102 | 500 | 500 | 320 | 8 | 2" F | 15 mc/h |
| | OR 75 | 73 103 | 750 | 500 | 320 | 8 | 2" F | 22 mc/h |
| | OR 100 | 73 104 | 1000 | 500 | 320 | 8 | 2 1/2" F | 30 mc/h |
| VERT. STANDARD VERTICAL STANDARD | VA 33 | 73 105 | 330 | 430 | 280 | 8 | 1 1/2" F | 10 mc/h |
| | VA 50 | 73 106 | 500 | 470 | 320 | 8 | 2" F | 15 mc/h |
| | VA 75 | 73 107 | 750 | 470 | 320 | 8 | 2" F | 22 mc/h |
| | VA 100 | 73 108 | 1000 | 470 | 320 | 8 | 2 1/2" F | 30 mc/h |
| VERTICALE STRETTA VERTICAL TIGHT | VB 20 | 73 109 | 200 | 200 | 100 | 8 | 1 1/2" F | 8 mc/h |
| | VB 30 | 73 110 | 300 | 250 | 150 | 8 | 1 1/2" F | 10 mc/h |
| | VB 40 | 73 111 | 400 | 350 | 250 | 8 | 1 1/2" F | 12 mc/h |
| | VB 50 | 73 112 | 500 | 400 | 300 | 8 | 2" F | 15 mc/h |

COSTRUITA IN ACCIAIO INOX AISI 316 L - V4 A

DECAPAGGIO ESTERNO

MANUFACTURED WITH AISI 316 L - V4 A STAINLESS STEEL

EXTERNALLY PICKLING