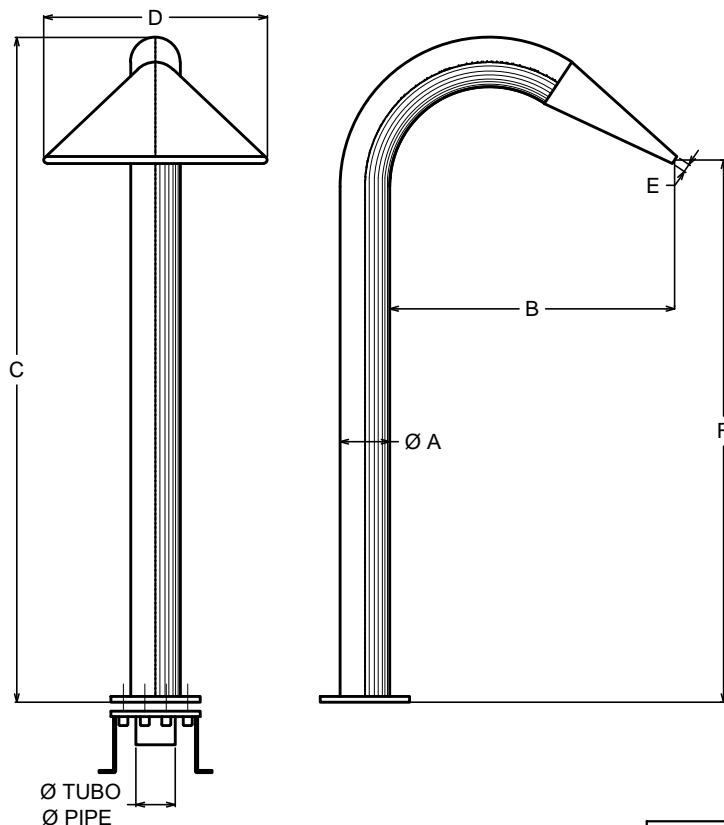


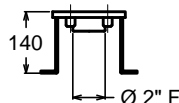
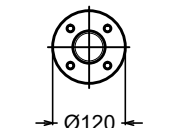
FONTANA INOX A VENTAGLIO STAINLESS STEEL FAN FOUNTAIN



CONTROFLANGE DA CEMENTARE CONCRETE COUNTERFLANGES

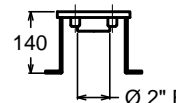
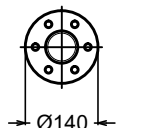
PER FONTANA
FOR FOUNTAIN

CODICE / CODE
71 079 - A Ø 60
4 fori / holes



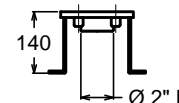
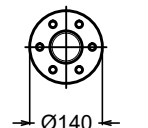
PER FONTANA
FOR FOUNTAIN

CODICE / CODE
71 079 - A Ø 76
6 fori / holes



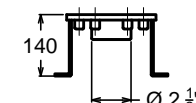
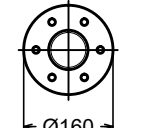
PER FONTANA
FOR FOUNTAIN

CODICE / CODE
71 080
6 fori / holes



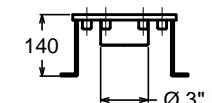
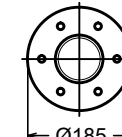
PER FONTANA
FOR FOUNTAIN

CODICE / CODE
71 081
6 fori / holes



PER FONTANA
FOR FOUNTAIN

CODICE / CODE
71 082
6 fori / holes



COSTRUITA IN ACCIAIO INOX AISI 316 L - V4A
VERNICIATURA A FORNO: ARGENTO O AZZURRO - METALLIZZATO

MANUFACTURED WITH AISI 316 L - V4A STAINLESS STEEL
STOVED PAINT FINISH: METALLIC, SILVER OR AZURE

MAR.COD : 71079 - 71080
71081 - 71 082
del 08/07/2016 rev. 0

CODICE CODE	TIPO TYPE	Ø A	B	C	D x E	F	Ø TUBO Ø PIPE	PORTATA FLOW RATE
71 079	V- 200	60/76	510	1060	200x15	900	mm 63	20 mc/h
71 080	V- 300	76	510	1060	300x15	900	mm 63	25 mc/h
71 081	V- 400	89	580	1180	400x15	1000	mm 75	38 mc/h
71 082	V- 500	114	700	1420	500x15	1200	mm 90	50 mc/h